



AADISH gears

& transmissions Pvt. Ltd.

YOUR TRANSMISSIONS PARTNER



ADDRESS:

AADISH GEARS & TRANSMISSIONS PVT.LTD.

S.NO. - 82/6, DANGAT PATIL NAGAR , NEAR MOBILE TOWER, SHIVANE, PUNE-411023

STANDARD

SPROCKETS CATALOGUE



CONTENTS

PAGE NO.

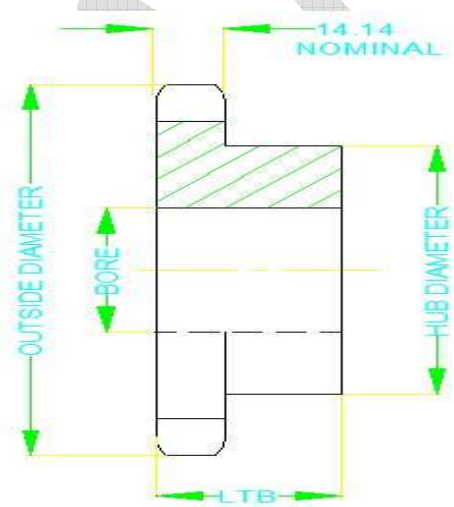
TOPICS.

1.	COVER
2.	CONTENTS
3.	1" SIMPLEX SPROCKETS
4.	1" DUPLEX SPROCKETS
5.	1" TRIPLEX SPROCKETS
6.	5/8" SIMPLEX SPROCKETS (NON WELDED)
7.	5/8" SIMPLEX SPROCKETS (WELDED)
8.	5/8" DUPLEX SPROCKETS
9.	5/8" TRIPLEX SPROCKETS
10.	3/4" SIMPLEX SPROCKETS
11.	3/4" DUPLEX SPROCKETS
12.	3/4" TRIPLEX SPROCKETS
13.	1/2" SIMPLEX SPROCKETS
14.	1/2" DUPLEX SPROCKETS
15.	1/2" TRIPLEX SPROCKETS
16.	3/8" SIMPLEX SPROCKETS
17.	3/8" DUPLEX SPROCKETS
18.	3/8" TRIPLEX SPROCKETS
19.	1/4" SIMPLEX SPROCKETS

Quality process ensuring
quality products



1" SIMPLEX SPROCKET						
NO. OF TEETH	OUTSIDE DIAMETER	PITCH DIAMETER	PLAIN BORE	HUB DIAMETER	LTB	NET PRICE
9	85	74.3	25	50	40	313
10	93	82.2	25	60	40	367
11	102	90.2	25	65	40	450
12	110	98.1	25	80	40	463
13	118	106.1	25	80	40	528
14	127	114.1	25	85	40	598
HUB WELDED SPROCKETS						
15	135	122.2	25	95	40	676
16	143	130.2	25	95	40	724
17	151	138.2	25	95	41	748
18	159	146.3	25	95	41	798
19	167	154.3	25	95	41	850
20	176	162.4	25	115	48	1027
21	184	170.4	25	115	48	1082
22	192	178.5	25	115	48	1219
24	208	194.6	25	115	48	1306
26	224	210.7	35	120	48	1450
27	233	218.8	35	120	48	1525
28	241	226.8	35	120	48	1543
30	257	243.0	35	120	48	1703
36	306	291.4	35	120	48	2198



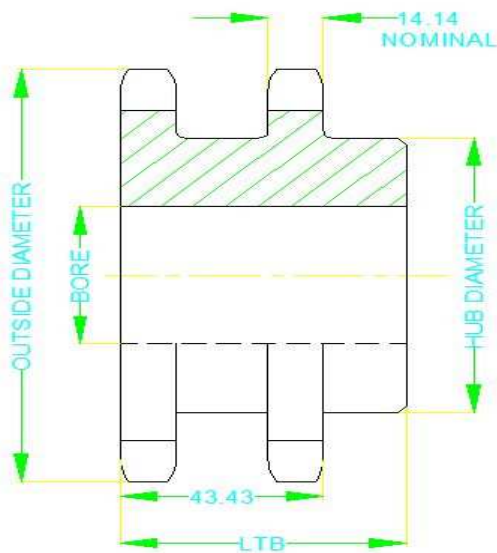
PCD RUNOUT - MAX. 0.1 mm.
HUB RUNOUT - MAX. 0.2 mm.

NOTE:

- ALL SPROCKETS ARE MAUFACTURED FROM ALLOY STEEL.
- HEAT TREATMENT CAN BE PROVIDED AT EXTRA COST.
- QTY DISCOUNTS: 0 - 10 NOS. = NO DIS.
11 - 20 NOS. = 5% DIS.
21 - 50 NOS. = 7.5% DIS.
51 + QTY = 10 % DIS
- DISCOUNT WILL BE GIVEN FOR SINGLE OF ONE SIZE ONLY.

1" DUPLEX SPROCKET						
NO. OF TEETH	OUTSIDE DIAMETER	PITCH DIAMETER	PLAIN BORE	HUB DIAMETER	LTB	NET PRICE
10	93	82.2	25	65	64	504
11	102	90.2	25	65	64	625
12	110	98.1	25	70	64	642
13	118	106.1	25	80	64	737
14	127	114.1	25	85	64	839
15	135	122.2	25	90	64	947

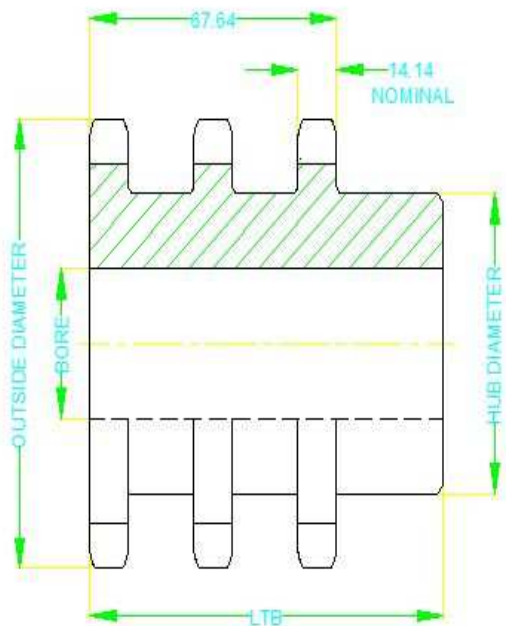
HUB WELDED SPROCKETS						
16	143	130.2	25	98	70	1075
17	151	138.2	25	108	70	1130
18	159	146.3	25	118	70	1264
19	167	154.3	25	125	70	1405
20	176	162.4	25	128	70	1512
21	184	170.4	25	128	70	1624
22	192	178.5	25	128	70	1927
23	200	187.2	25	128	70	1948
24	208	194.6	25	128	70	2088
25	216	203.2	25	128	70	2234
30	257	243.0	25	138	76	3010
36	306	291.4	35	138	79	4014



NOTE:

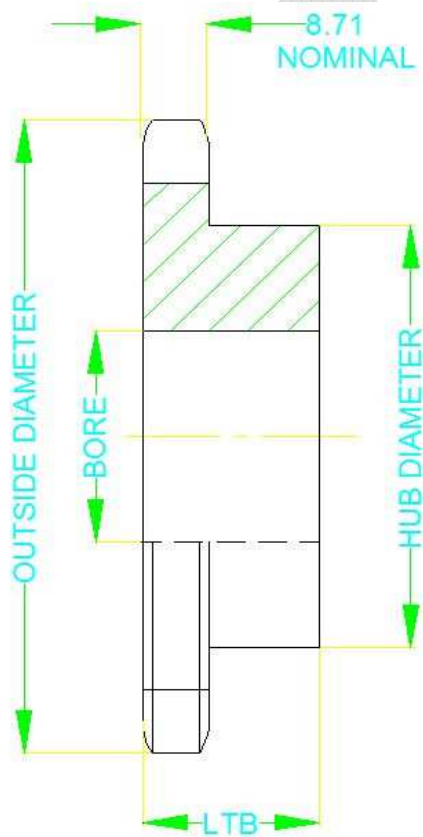
1. ALL SPROCKETS ARE MAUFACTURED FROM ALLOY STEEL.
2. HEAT TREATMENT CAN BE PROVIDED AT EXTRA COST.
3. QTY DISCOUNTS: 0 - 10 NOS. = NO DIS.
 11 - 20 NOS. = 5% DIS.
 21 - 50 NOS. = 7.5% DIS.
 51 + QTY = 10 % DIS
4. DISCOUNT WILL BE GIVEN FOR SINGLE OF ONE SIZE ONLY.

1" TRIPLEX SPROCKETS						
NO. OF TEETH	OUTSIDE DIAMETER	PITCH DIAMETER	PLAIN BORE	HUB DIAMETER	LTB	NET PRICE
11	102	90.2	25	60	92	824
12	110	98.1	25	70	92	845
13	118	106.1	25	80	92	973
14	127	114.1	25	85	92	1112
15	135	122.2	25	90	92	1261
HUB WELDED SPROCKETS						
16	143	130.2	25	98	98	1489
17	150	138.2	25	108	98	1544
18	159	146.3	25	115	98	1730
19	167	154.3	25	125	98	1927
20	176	162.4	25	128	98	2094
21	184	170.4	25	128	98	2270
22	192	178.5	25	128	98	2765
23	200	188.1	25	128	98	2789
24	208	194.6	25	128	98	3013
25	216	204.2	25	138	108	3383
30	257	243.0	25	138	108	4439

**NOTE:**

- ALL SPROCKETS ARE MANUFACTURED FROM ALLOY STEEL.
- HEAT TREATMENT CAN BE PROVIDED AT EXTRA COST.
- QTY DISCOUNTS: 0 - 10 NOS. = NO DIS.
11 - 20 NOS. = 5% DIS.
21 - 50 NOS. = 7.5% DIS.
51 + QTY = 10% DIS
- DISCOUNT WILL BE GIVEN FOR SINGLE OF ONE SIZE ONLY.

5/8" SIMPLEX SPROCKETS						
NO. OF TEETH	OUTSIDE DIAMETER	PITCH DIAMETER	PLAIN BORE	HUB DIAMETER	LTB	NET PRICE
9	53	46.4	16	35	25	180
10	58	51.4	16	40	25	202
11	64	56.4	16	46	25	223
12	69	61.3	16	50	25	246
13	74	66.3	16	50	25	270
14	79	71.3	16	55	25	294
15	84	76.4	16	60	25	319
16	89	81.4	16	65	25	344
17	94	86.4	16	70	25	371
18	100	91.4	16	75	29	418
19	105	96.5	16	75	29	446
20	110	101.5	16	75	29	478
21	115	106.5	20	75	32	550
22	120	111.6	20	75	32	562
23	125	116.6	20	75	32	619
24	130	121.6	20	75	32	631

**NOTE:**

1. ALL SPROCKETS ARE MANUFACTURED FROM ALLOY STEEL.
2. HEAT TREATMENT CAN BE PROVIDED AT EXTRA COST.
3. QTY DISCOUNTS: 0 - 10 NOS. = NO DIS.
11 - 20 NOS. = 5% DIS.
21 - 50 NOS. = 7.5% DIS.
51 + QTY = 10% DIS
4. DISCOUNT WILL BE GIVEN FOR SINGLE OF ONE SIZE ONLY.

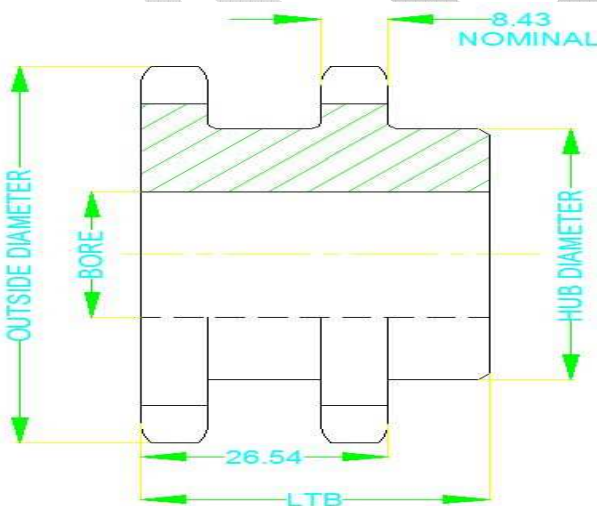
5/8" SIMPLEX SPROCKETS						
HUB WELDED SPROCKETS						
NO. OF TEETH	OUTSIDE DIAMETER	PITCH DIAMETER	PLAIN BORE	HUB DIAMETER	LTB	NET PRICE
25	135	126.7	20	78	32	553
26	140	131.7	20	78	32	565
27	145	136.8	20	78	32	594
28	150	141.8	20	78	32	606
29	155	146.8	20	78	32	636
30	161	151.9	20	78	32	649
31	166	156.9	20	83	35	702
32	171	162.0	20	83	35	714
33	176	167.0	20	83	35	746
34	181	172.1	20	83	35	760
35	186	177.1	20	83	35	792
36	191	182.1	20	83	35	805
37	196	187.2	20	83	35	876
38	201	192.3	20	83	35	889
40	211	202.3	20	83	35	941
42	221	212.4	20	83	35	994
45	237	227.6	20	83	35	1091
48	252	242.7	25	83	35	1194
50	262	252.8	25	83	35	1253
55	287	278.1	25	83	35	1408
60	312	303.3	25	83	35	1507

PCD RUNOUT-MAX. 0.1mm
HUB RUNOUT-MAX. 0.2mm

NOTE:

- ALL SPROCKETS ARE MAUFACTURED FROM ALLOY STEEL.
- HEAT TREATMENT CAN BE PROVIDED AT EXTRA COST.
- QTY DISCOUNTS: 0 - 10 NOS. = NO DIS.
11 - 20 NOS. = 5% DIS.
21 - 50 NOS. = 7.5% DIS.
51 + QTY = 10 % DIS
- DISCOUNT WILL BE GIVEN FOR SINGLE OF ONE SIZE ONLY.

5/8" DUPLEX SPROCKETS						
NO. OF TEETH	OUTSIDE DIAMETER	PITCH DIAMETER	PLAIN BORE	HUB DIAMETER	LTB	NET PRICE
11	63.6	56.4	16	37	45	298
12	68.8	61.3	16	43	45	330
13	73.9	66.3	16	48	45	365
14	79.1	71.3	16	53	45	400
15	84.2	76.4	16	58	45	436
16	89.3	81.4	16	64	45	473
17	94.4	86.4	16	68	45	511
18	99.5	91.4	16	73	45	550
19	104.7	96.5	16	79	45	618
20	109.8	101.5	16	83	45	632
21	114.9	106.5	20	89	45	704
22	119.9	111.6	20	90	50	755
23	125.0	116.6	20	95	50	838
24	130.1	121.6	20	95	50	853
WELDED SPROCKETS						
25	135.2	126.7	25	95	50	912
26	140.3	131.7	25	95	50	929
30	160.6	151.9	25	95	50	1094
32	170.7	162.0	25	95	50	1182
35	185.9	177.1	25	95	50	1350
36	191.0	182.1	25	98	55	1391
40	211.2	202.3	25	98	55	1784
42	221.4	212.4	25	98	55	1903
45	236.6	227.6	25	98	55	2090
48	251.7	242.7	25	108	60	2352
52	272.0	263.0	25	108	75	2748

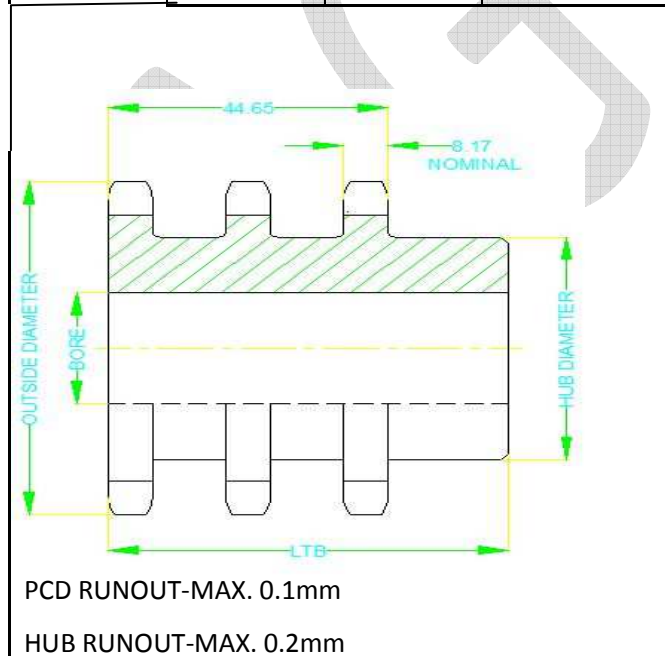


PCD RUNOUT-MAX. 0.1mm
HUB RUNOUT-MAX. 0.2mm

NOTE:-

1. ALL SPROCKETS ARE MANUFACTURED FROM ALLOY STEEL.
2. HEAT TREATMENT CAN BE PROVIDED AT EXTRA COST.
3. QTY DISCOUNTS: 0-10 NOS. NO DIS
11-20 NOS. 5% DIS
21-50 NOS. 7.5% DIS
51+ QTY. 10% DIS
4. DISCOUNT WILL BE GIVEN FOR SINGLE ORDER OF ONE SIZE ONLY.

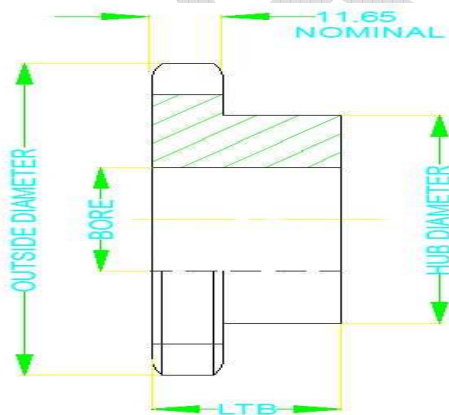
5/8" TRIPLEX SPROCKETS						
NO. OF TEETH	OUTSIDE DIAMETER	PITCH DIAMETER	PLAIN BORE	HUB DIAMETER	LTB	NET PRICE
11	63.6	56.4	16	37	60	362
12	68.8	61.3	16	42	60	403
13	73.9	66.3	16	47	60	445
14	79.1	71.3	16	53	60	488
15	84.2	76.4	16	58	60	534
16	89.3	81.4	16	63	60	581
17	94.4	86.4	16	68	60	629
18	99.5	91.4	16	73	60	678
19	104.7	96.5	16	78	60	764
20	109.8	101.5	16	83	65	812
21	114.9	106.5	20	88	65	910
22	119.9	111.6	20	88	65	928
23	125.0	116.6	20	93	65	1032
24	130.1	121.6	20	93	65	1050
HUB WELDED SPROCKETS						
25	135.2	126.7	25	93	65	1150
26	140.3	131.7	25	93	65	1169
30	160.6	151.9	25	93	65	1405
35	185.9	177.1	25	93	65	1778
36	191.0	182.1	25	98	65	1811



NOTE:-

- ALL SPROCKETS ARE MANUFACTURED FROM ALLOY STEEL.
- HEAT TREATMENT CAN BE PROVIDED AT EXTRA COST.
- QTY DISCOUNTS: 0-10 NOS. NO DIS
11-20 NOS. 5% DIS
21-50 NOS. 7.5% DIS
51+ QTY. 10% DIS
- DISCOUNT WILL BE GIVEN FOR SINGLE ORDER OF ONE SIZE ONLY.

3/4" SIMPLEX SPROCKETS						
NO. OF TEETH	OUTSIDE DIAMETER	PITCH DIAMETER	PLAIN BORE	HUB DIAMETER	LTB	NET PRICE
9	64	55.7	20	45	32	200
10	70	61.6	20	50	32	223
11	76	67.6	20	50	32	263
12	83	73.6	20	60	32	289
13	89	79.6	20	60	32	316
14	95	85.6	20	65	32	344
15	101	91.6	20	75	32	373
16	107	97.7	20	80	32	422
17	113	103.7	20	85	32	475
18	119	109.7	20	85	32	486
19	126	115.7	20	85	32	542
20	132	121.8	20	85	32	641
21	138	127.8	20	85	32	652
22	144	133.9	20	85	32	720
23	150	139.9	25	98	38	804
24	156	145.9	25	98	38	887
25	162	152.0	25	98	38	974
26	168	158.0	25	98	38	985
HUB WELDED SPROCKET						
27	174	164.1	25	108	38	851
28	180	170.1	25	108	38	864
29	187	176.2	25	108	38	908
30	193	182.2	25	108	38	1016
31	199	188.3	25	108	38	1050
32	205	194.4	25	108	38	1084
33	211	200.4	25	108	38	1126
35	223	212.5	25	108	38	1210
36	229	218.6	25	108	38	1247
38	241	230.7	25	108	38	1330
40	253	242.8	25	108	38	1422
42	266	254.9	25	108	38	1511
45	284	273.1	25	108	38	1650
48	302	291.3	25	108	38	1808
54	339	327.4	35	108	44	2162



PCD RUNOUT- MAX. 0.1mm

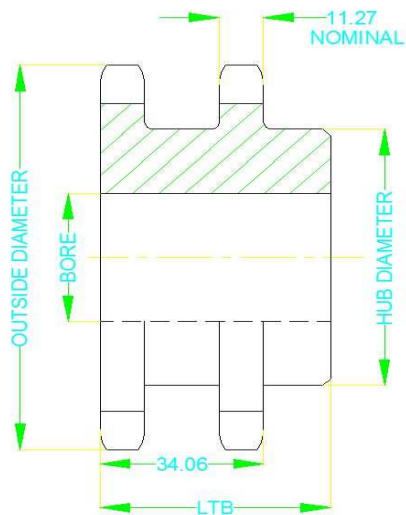
HUB RUNOUT- MAX. 0.2mm

NOTE:

1. ALL SPROCKETS ARE MAUFACTURED FROM ALLOY STEEL.
2. HEAT TREATMENT CAN BE PROVIDED AT EXTRA COST.
3. QTY DISCOUNTS: 0 - 10 NOS. = NO DIS.
 11 - 20 NOS. = 5% DIS.
 21 - 50 NOS. = 7.5% DIS.
 51 + QTY = 10 % DIS
4. DISCOUNT WILL BE GIVEN FOR SINGLE OF ONE SIZE ONLY.

3/4" DUPLEX SPROCKETS						
NO. OF TEETH	OUTSIDE DIAMETER	PITCH DIAMETER	PLAIN BORE	HUB DIAMETER	LTB	NET PRICE
11	76	76.3	20	45	54	365
12	83	82.5	20	50	54	403
13	89	88.7	20	60	54	443
14	95	94.9	20	65	54	484
15	101	101.0	20	70	54	526
16	107	107.2	20	75	54	601
17	113	113.3	20	80	54	682
18	119	119.5	25	90	54	695
19	126	125.6	25	95	54	781
20	132	131.7	25	95	54	936
21	138	137.8	25	105	54	950
22	144	143.9	25	110	54	1057
23	150	150.0	25	110	54	1070
24	156	156.1	25	110	54	1183
25	162	162.2	25	110	54	1303
26	168	168.3	25	110	54	1316

HUB WELDED SPROCKETS						
30	193	192.7	25	108	54	1532
32	205	204.9	30	118	60	1676
35	223	223.1	30	118	60	1927
36	229	229.2	30	118	60	1997
40	253	253.5	30	118	70	2347
45	284	283.9	30	118	70	2807
48	302	302.1	30	118	70	3131

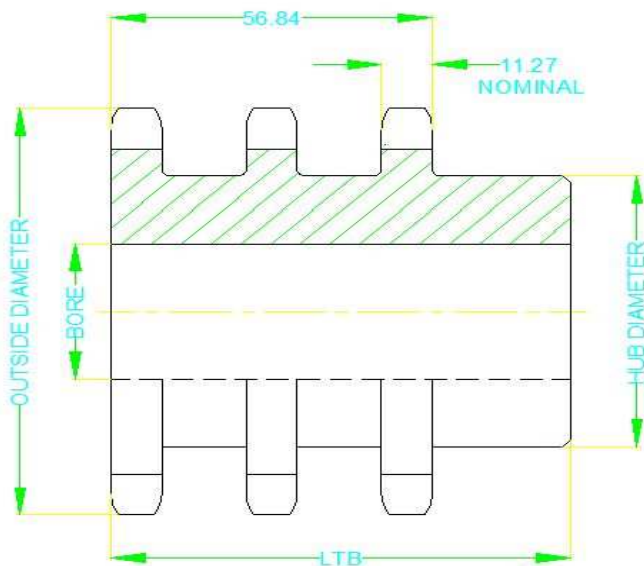


PCD RUNOUT- MAX. 0.1mm
 HUB RUNOUT- MAX. 0.2mm

NOTE:

1. ALL SPROCKETS ARE MAUFACTURED FROM ALLOY STEEL.
2. HEAT TREATMENT CAN BE PROVIDED AT EXTRA COST.
3. QTY DISCOUNTS: 0 - 10 NOS. = NO DIS.
 11 - 20 NOS. = 5% DIS.
 21 - 50 NOS. = 7.5% DIS.
 51 + QTY = 10 % DIS
4. DISCOUNT WILL BE GIVEN FOR SINGLE OF ONE SIZE ONLY.

3/4" TRIPLEX SPROCKETS						
NO. OF TEETH	OUTSIDE DIAMETER	PITCH DIAMETER	PLAIN BORE	HUB DIAMETER	LTB	NET PRICE
11	76	76.3	20	45	76	467
12	83	82.5	20	50	76	517
13	89	88.7	20	60	76	569
14	95	94.9	20	65	76	623
15	101	101.0	20	70	76	679
16	107	107.2	20	75	76	780
17	113	113.3	20	80	76	888
18	119	119.5	25	90	76	905
19	126	125.6	25	95	76	1021
20	132	131.7	25	95	76	1232
21	138	137.8	25	105	76	1249
22	144	143.9	25	108	76	1394
23	150	150.0	25	108	76	1411
24	156	156.1	25	108	76	1564
HUB WELDED SPROCKETS						
25	162	162.2	25	108	76	1634
26	168	168.3	25	108	76	1655
30	193	192.7	25	108	76	2348
35	223	223.1	30	118	83	3043
36	229	229.2	30	118	83	3155

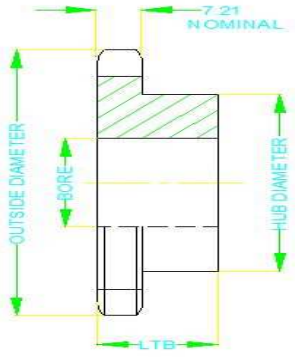


NOTE:-

- ALL SPROCKETS ARE MANUFACTURED FROM ALLOY STEEL.
- HEAT TREATMENT CAN BE PROVIDED AT EXTRA COST.
- QTY DISCOUNTS: 0-10 NOS. NO DIS
11-20 NOS. 5% DIS
21-50 NOS. 7.5% DIS
51+ QTY. 10% DIS
- DISCOUNT WILL BE GIVEN FOR SINGLE ORDER OF ONE SIZE ONLY.

PCD RUNOUT- MAX. 0.1mm
HUB RUNOUT- MAX. 0.2mm

1/2" SIMPLEX SPROCKETS						
NO. OF TEETH	OUTER DIAMETER	PCD	BORE	HUB DIA	LTB	NET PRICE
9	43	37.1	12	29	22	133
10	47	41.1	12	32	22	149
11	51	45.1	12	37	22	166
12	55	49.1	12	40	22	175
13	59	53.1	12	40	22	193
14	63	57.1	12	43	22	211
15	67	61.1	12	46	22	230
16	71	65.1	16	51	22	250
17	76	69.1	16	54	22	269
18	80	73.1	16	59	22	278
19	84	77.2	16	64	22	299
20	88	81.2	16	67	25	332
21	92	85.2	16	70	25	355
22	96	89.2	16	70	25	379
23	100	93.3	16	70	25	389
24	104	97.3	16	70	25	413
25	108	101.3	16	70	25	438
26	112	105.4	16	70	25	482
27	116	109.4	16	70	25	491
28	120	113.4	16	70	25	500
30	128	121.5	16	70	25	556
HUB WELDED SPROCKETS						
32	137	129.6	20	64	25	538
34	145	137.6	20	64	25	574
35	149	141.7	20	64	25	586
36	153	145.7	20	64	25	611
38	161	153.8	20	76	29	673
40	169	161.9	20	76	29	712
42	177	170.0	20	76	29	750
45	189	182.1	20	76	29	802
48	201	194.2	20	76	29	887
49	205	198.2	25	98	29	970
50	209	202.3	25	98	29	992
54	226	218.4	25	98	29	1079
60	250	242.7	25	98	29	1211

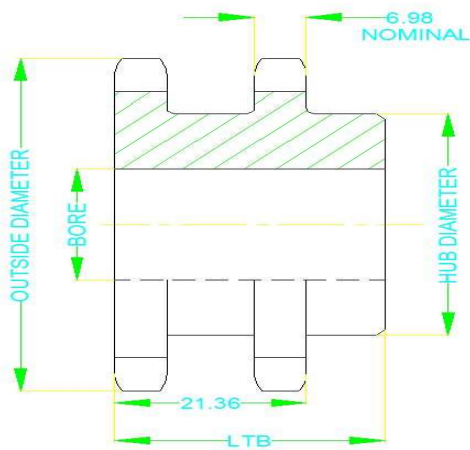


HUB RUNOUT- MAX. 0.1m
PCD RUNOUT- MAX. 0.1mm

NOTE:

1. ALL SPROCKETS ARE MANUFACTURED FROM ALLOY STEEL.
2. HEAT TREATMENT CAN BE PROVIDED AT EXTRA COST.
3. QTY DISCOUNTS: 0 - 10 NOS. = NO DIS.
11 - 20 NOS. = 5% DIS.
21 - 50 NOS. = 7.5% DIS.
51 + QTY = 10% DIS
4. DISCOUNT WILL BE GIVEN FOR SINGLE OF ONE SIZE ONLY.

1/2" DUPLEX SPROCKETS						
NO. OF TEETH	OUTER DIAMETR	PITCH DIAMETE R	PLAIN BORE	HUB DIAMETER	LENGTH THRU BORE	NET PRICE
11	51	45.1	12	37	38	223
12	55	49.1	12	40	38	235
13	59	53.1	12	40	38	260
14	63	57.1	12	42	38	287
15	67	61.1	12	46	38	314
16	72	65.1	16	50	38	342
17	76	69.1	16	55	38	371
18	80	73.1	16	59	38	383
19	84	77.2	16	63	38	413
20	88	81.2	16	67	41	456
21	92	85.2	16	71	41	490
22	96	89.2	16	75	41	524
23	100	93.3	16	79	41	536
24	104	97.3	16	82	41	596
25	108	101.3	16	87	41	610
26	112	105.4	16	88	41	673
30	128	121.5	16	83	41	779
HUB WELDED SPROCKETS						
35	149	141.7	20	83	41	946
36	153	145.7	20	95	44	1037
40	169	161.9	20	95	44	1140
45	189	182.1	20	95	44	1310
48	201	194.2	20	95	44	1571
54	226	218.4	25	95	44	1799
60	250	242.7	25	95	44.5	2087



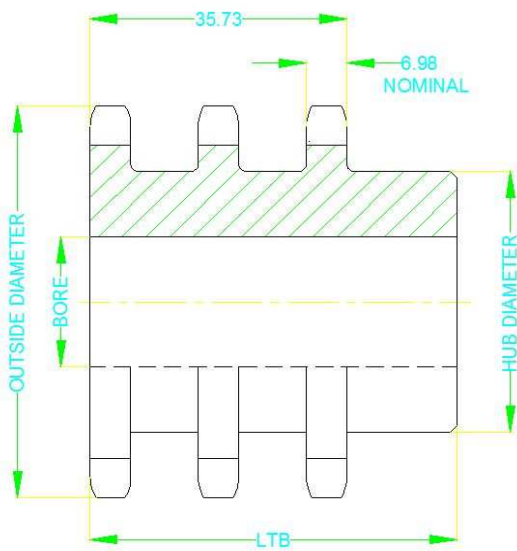
PCD RUNOUT = MAX. 0.1 mm
 HUB RUNOUT = MAX. 0.2 mm

NOTE:

- ALL SPROCKETS ARE MANUFACTURED FROM ALLOY STEEL.
- HETA TREATMENT CAN BE PROVIDED. AT EXTRA COST.
- QTY DISCOUNTS: 0 - 10 NOS. = NO DIS
 11 - 20 NOS. = 5% DIS
 21 - 50 NOS. = 7.5% DIS
 51 + QTY = 10% DIS
- DISCOUNT WILL BE GIVEN FOR SINGLE OF ONE SIZE ONLY.

1/2" TRIPLEX SPROCKETS						
NO. OF TEETH	OUTER DIAMETER	PITCH DIAMETER	PLAIN BORE	HUB DIAMETER	LENGTH THRU BORE	NET PRICE
11	51	45.1	12	37	54	281
12	55	49.1	12	40	54	295
13	59	53.1	12	40	54	329
14	63	57.1	12	42	54	362
15	67	61.1	12	46	54	397
16	72	65.1	16	50	54	434
17	76	69.1	16	55	54	473
18	80	73.1	16	59	54	488
19	84	77.2	16	63	54	528
20	88	81.2	16	67	57	581
21	92	85.2	16	71	57	624
22	96	89.2	16	75	57	670
23	100	93.3	16	79	57	685
24	104	97.3	16	82	57	764
25	108	101.3	16	87	57	780
26	112	105.4	16	91	57	865

HUB WELDED SPROCKETS						
30	128	121.5	25	83	57	1052
35	149	137.6	25	83	57	1268
36	153	141.7	25	95	60	1408



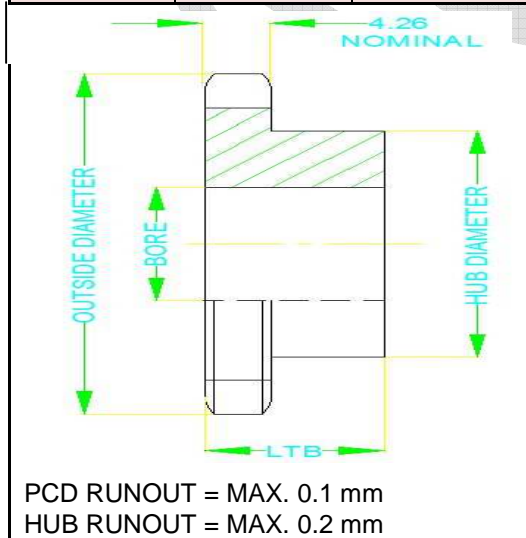
PCD RUNOUT = MAX. 0.1 mm
 HUB RUNOUT = MAX. 0.2 mm

NOTE:

1. ALL SPROCKETS ARE MANUFACTURED FROM ALLOY STEEL.
2. HETA TREATMENT CAN BE PROVIDED. AT EXTRA COST.
3. QTY DISCOUNTS: 0 - 10 NOS. = NO DIS
 11 - 20 NOS. = 5% DIS
 21 - 50 NOS. = 7.5% DIS
 51 + QTY = 10% DIS
4. DISCOUNT WILL BE GIVEN FOR SINGLE OF ONE SIZE ONLY.

3/8" SIMPLEX SPROCKETS						
NO. OF TEETH	OUTSIDE DIAMETER	PITCH DIAMETER	PLAIN BORE	HUB DIAMETER	LTB	NET PRICE
9	32	27.8	10	20	19	109
10	35	30.8	10	25	19	118
11	38	33.8	10	25	19	131
12	41	36.8	12	30	19	145
13	44	39.8	12	30	19	154
14	47	42.8	12	30	19	168
15	51	45.8	12	35	19	184
16	54	48.8	12	35	19	191
17	57	51.8	12	40	19	208
18	60	54.9	12	45	19	215
19	63	57.9	12	50	19	232
20	66	60.9	12	50	19	248
21	69	63.9	12	55	19	257
22	72	66.9	12	55	19	275
23	75	70.0	12	55	19	282
24	78	72.1	12	55	22	310
25	81	76.0	12	55	22	330
26	84	79.0	12	60	25	349
27	87	82.0	12	60	25	371
28	90	85.1	12	60	25	379
30	96	91.1	12	60	25	425

HUB WELDED SPROCKETS						
32	102	97.2	16	58	25	424
35	112	106.2	16	58	25	461
36	115	109.3	16	58	25	470
40	127	121.4	16	58	25	517
42	133	127.5	16	58	25	551
45	142	136.6	16	58	25	590
48	150	145.6	16	58	25	620
54	169	163.8	16	58	25	700
60	187	182.0	20	58	25	782

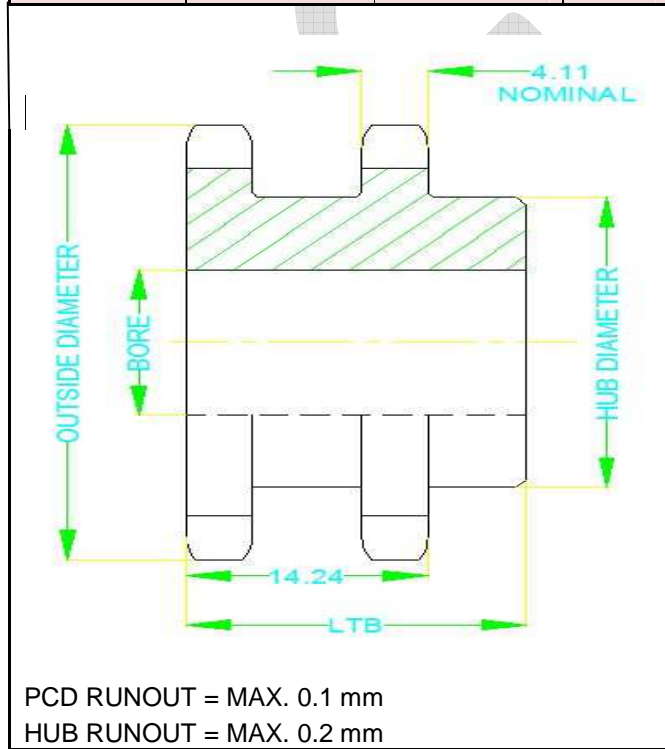


NOTE:

- ALL SPROCKETS ARE MANUFACTURED FROM ALLOY STEEL.
- HETA TREATMENT CAN BE PROVIDED. AT EXTRA COST.
- QTY DISCOUNTS: 0 - 10 NOS. = NO DIS
11 - 20 NOS. = 5% DIS
21 - 50 NOS. = 7.5% DIS
51 + QTY = 10% DIS
- DISCOUNT WILL BE GIVEN FOR SINGLE OF ONE SIZE ONLY.

3/8" DUPLEX SPROCKETS						
NO. OF TEETH	OUTSIDE DIAMETER	PITCH DIAMETER	MAX. BORE	HUB DIAMETER	LTB	NET PRICE
13	44	39.8	12	30	32	199
14	47	42.8	12	32	32	220
15	51	45.8	12	35	32	240
16	54	48.8	12	40	32	251
17	57	51.8	12	40	32	272
18	60	54.9	12	45	32	283
19	63	57.9	12	50	32	306
20	66	60.9	12	50	35	337
21	69	63.9	12	50	35	348
22	72	66.9	12	55	35	373
23	75	70.0	12	60	35	384
24	78	72.1	12	60	35	410
25	81	76.0	12	65	35	438
26	84	79.0	12	68	35	449
30	96	91.1	12	68	35	547

HUB WELDED SPROCKET						
36	115	109.3	16	68	35	668
42	133	127.5	16	68	35	806
48	151	145.6	16	68	35	912
52	163	157.6	16	68	35	1021
60	187	182.0	20	68	35	1190



NOTE:

1. ALL SPROCKETS ARE MANUFACTURED FROM ALLOY STEEL.
2. HETA TREATMENT CAN BE PROVIDED. AT EXTRA COST.
3. QTY DISCOUNTS: 0 - 10 NOS. = NO DIS
 11 - 20 NOS. = 5% DIS
 21 - 50 NOS. = 7.5% DIS
 51 + QTY = 10% DIS
4. DISCOUNT WILL BE GIVEN FOR SINGLE OF ONE SIZE ONLY.

PCD RUNOUT = MAX. 0.1 mm
 HUB RUNOUT = MAX. 0.2 mm

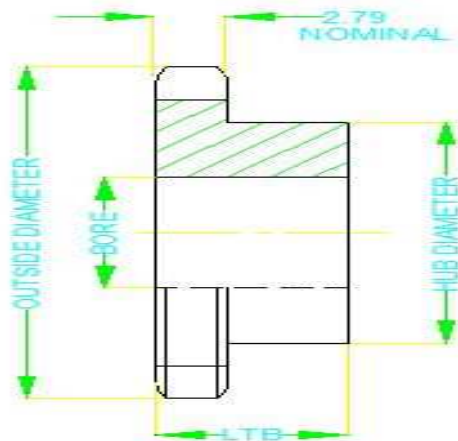
3/8" TRIPLEX SPROCKET						
NO. OF TEETH	OUTSIDE DIAMETER	PITCH DIAMETER	MAX. BORE	HUB DIAMETER	LTB	NET PRICE
13	44	39.8	12	30	44	241
14	47	42.8	12	30	44	266
15	51	45.8	12	40	44	292
16	54	48.8	12	40	44	306
17	57	51.8	12	40	44	334
18	60	54.9	12	48	44	347
19	63	57.9	12	48	44	376
20	66	60.9	12	48	48	414
21	69	63.9	12	50	48	428
22	72	66.9	12	55	48	461
23	75	70.0	12	55	48	474
24	78	72.1	12	55	48	508
25	81	76.0	12	55	48	650
26	84	79.0	12	64	48	556
30	96	91.1	12	64	48	682
HUB WELDED SPROCKETS						
36	115	109.3	16	64	48	883
42	133	127.5	16	64	48	1086
48	151	145.6	16	64	48	1230
52	163	157.4	16	64	48	1394
60	187	182.0	20	64	48	1638
68	212	206.2	20	89	48	2195
72	224	218.2	20	89	48	2366
76	236	230.4	20	89	48	2543
84	260	254.8	20	89	48	2914
95	294	288.0	20	95	54	3530
96	297	291.1	20	95	54	3582
102	315	309.4	20	95	54	3901

PCD RUNOUT = MAX. 0.1 mm
HUB RUNOUT = MAX. 0.2 mm

NOTE:

- ALL SPROCKETS ARE MANUFACTURED FROM ALLOY STEEL.
- HETA TREATMENT CAN BE PROVIDED. AT EXTRA COST.
- QTY DISCOUNTS: 0 - 10 NOS. = NO DIS
11 - 20 NOS. = 5% DIS
21 - 50 NOS. = 7.5% DIS
51 + QTY = 10% DIS
- DISCOUNT WILL BE GIVEN FOR SINGLE OF ONE SIZE ONLY.

1/4" SIMPLEX SPROCKETS						
NO. OF TEETH	OUTSIDE DIAMETER	PITCH DIAMETER	PLAIN BORE	HUB DIAMETER	LENGTH THRU BORE	NET PRICE
9	21	18.6	6	10	13	94
10	23	20.5	6	13	13	101
11	25	22.5	6	14	13	109
12	28	24.5	6	16	13	120
13	30	26.5	6	18	13	127
14	32	28.5	8	21	13	139
15	34	30.6	8	22	13	146
16	36	32.6	8	25	13	158
17	38	34.6	8	25	13	167
18	40	36.6	8	25	13	174
19	42	38.6	10	30	13	186
20	44	40.6	10	30	16	197
21	46	42.6	10	30	16	210
22	48	44.6	10	30	16	217
23	50	46.6	10	38	16	226
24	52	48.6	12	38	16	239
25	54	50.7	12	38	16	247
26	56	52.7	12	38	16	262
28	60	56.7	12	38	16	276
30	64	60.8	12	38	16	299
32	68	64.8	12	38	16	322
35	74	70.8	12	38	16	353
36	76	72.8	12	38	19	378
40	85	80.9	16	60	19	419
45	95	91.0	16	60	19	491
48	101	97.1	16	60	19	514
54	113	109.2	16	60	19	613
50	125	121.3	16	60	19	612
72	149	145.6	16	60	19	874



PCD RUNOUT = MAX. 0.1 mm
HUB RUNOUT = MAX. 0.2 mm

NOTE:

1. ALL SPROCKETS ARE MANUFACTURED FROM ALLOY STEEL.
2. HETA TREATMENT CAN BE PROVIDED. AT EXTRA COST.
3. QTY DISCOUNTS: 0 - 10 NOS. = NO DIS
11 - 20 NOS. = 5% DIS
21 - 50 NOS. = 7.5% DIS
51 + QTY = 10% DIS
4. DISCOUNT WILL BE GIVEN FOR SINGLE OF ONE SIZE ONLY.